



TYPE:	Mangusta 80' Open	FLAG:	Italian
BUILDER:	Overmarine	YEAR:	2003
DESIGNER:	Rodriguez	REFITS:	N/A
CLASSIFICATION:	RINA	LOA:	78'03" 23.79 m
ENGINES:	2 x 2000hp MTU 16V-M91	BEAM:	19'35" 5.90 m
SPEED:	about 40 knots cruising; about 45 knots maximum	DRAFT:	3'6" 1.10 m
RANGE:	340 nm	HULL MATERIAL:	GRP
RUNNING HOURS:	900	S / STRUCTURE:	GRP
ACCOMMODATIONS:	7 guests in 3 staterooms 3 crew in 2 cabin		

LOCATION: Olbia, Sardinia

Asking Price: € 800,000

ACCOMMODATIONS & LAYOUT:

MAIN DECK

There are several cushioned sun beds on the fore deck.

The WHEELHOUSE can accommodate 7 guests in addition to the captain.

The UPPER SALON features comfortable sofas on port and starboard side with coffee tables.

The AFT DECK has a lot of cushioned sun beds and access to the swimming platform.

LOWER DECK

CREW'S QUARTER, composed by two berths and en suite shower room, is located in the forepeak.

Full width MASTER STATEROOMS are furnished with double bed, sofa, vanity, two wardrobes, bathroom with separate shower and a DVD movie on the plasma screen TV.

Furthermore, a full width SALON with a Dining Area is on port side aft.

The American GALLEY is on starboard side. Next to the galley there is the staircase leading to the Upper Deck.

By the Opposite side there is a SINGLE CABIN with en suite which can be used for a guest or as Captain's cabin.

On the Aft there are two GUEST STATEROOMS: a twin bedded with en suite on starboard side and a double bedded with en suite on portside.

CAPACITIES:

- Fuel: 6,000 litres 1,585 US Gallons
- Water: 1,300 litres 343 US Gallons
- Watermaker: 130Lt/min
- Displacement: 119,7 tons
- Weight empty: 54 tons

ELECTRONICS AND NAVIGATION EQUIPMENT:

- Compass Riviera
- Radar Simrad
- Plotter Simrad Ce42
- Gps Furuno Gp32
- Navtex Furuno NX 300
- Autopilot Robertson AP20
- Loch Spedo Wind Simrad IS 15
- Sonde Loch Simrad
- Sonde Deph Simrad
- VHF Skanty CU1000P-Dsc
- MF/HF Sailor HC4500-B
- Monitor camera Vity-LCV 068

ELECTRICAL SYSTEM:

- Nr. 2 Generator Kholher 15 CCFOZ – 220Vac 16Kw 50Hz (2980 h)
- Shore power 220Vac – 50Hz
- 24V Dc Battery banks
- 24V to 12V converter for 12V consumers

MECHANICAL AND ENGINE EQUIPMENT:

- 2 x MTU 16V2000 M91 2000 hp engines – 1471Kw (900 h)
- Arneson surface drive transmissions ASD 15B1 Lu
- Reduction Gears ZF mod. BW 2555 – with a reduction 2,333:1
- Propeller – ARNESON SURFACE DRIVE a surface propeller by ROLLA RSP

GALLEY AND LAUNDRY:

- Washing machine: MIELE Novotronic WT 945
- Refrigerating : BOSCH
- Oven : MIELE H177MB
- The cooking top: MIELE KM 415

ENTERTAINMENT EQUIPMENT:

Main Saloon

- Tvc plasma Panasonic 42"
- Dvd Sony – Hi Fi Bose System – HP Surround System Bose
- Digital demodulateur Nokia

Bridgedek

- Tvc plasma Samsung 24"
- Dvd Sony – Digital demodulateur Nokia
- 4 Loudspeakers Linn – 1 subwoofer Revox

TENDERS & TOYS:

- One tender Novamarine Jet model RH350 jet - Mercury 160hp
- One Yamaha jet sky model GP1200 (**NOT FOR SALE**)

REMARKS:

A fine example of the Mangusta 80

VAT status: paid (but benefit not transferable)

All speeds, measurements, capacities, consumptions, etc. may be approximate or estimated. Specifications provided for information only. Data was obtained from sources believed to be reliable and is not guaranteed by owner. Buyer assumes the responsibility to ascertain the correctness of all data contained herein and otherwise provided and must instruct his agent and surveyors to confirm all details for accuracy prior to purchase. Subject to prior sale, price and inventory change, or withdrawal from market without notice.

- **LOCATION:** Olbia (Sardinia, Italy)



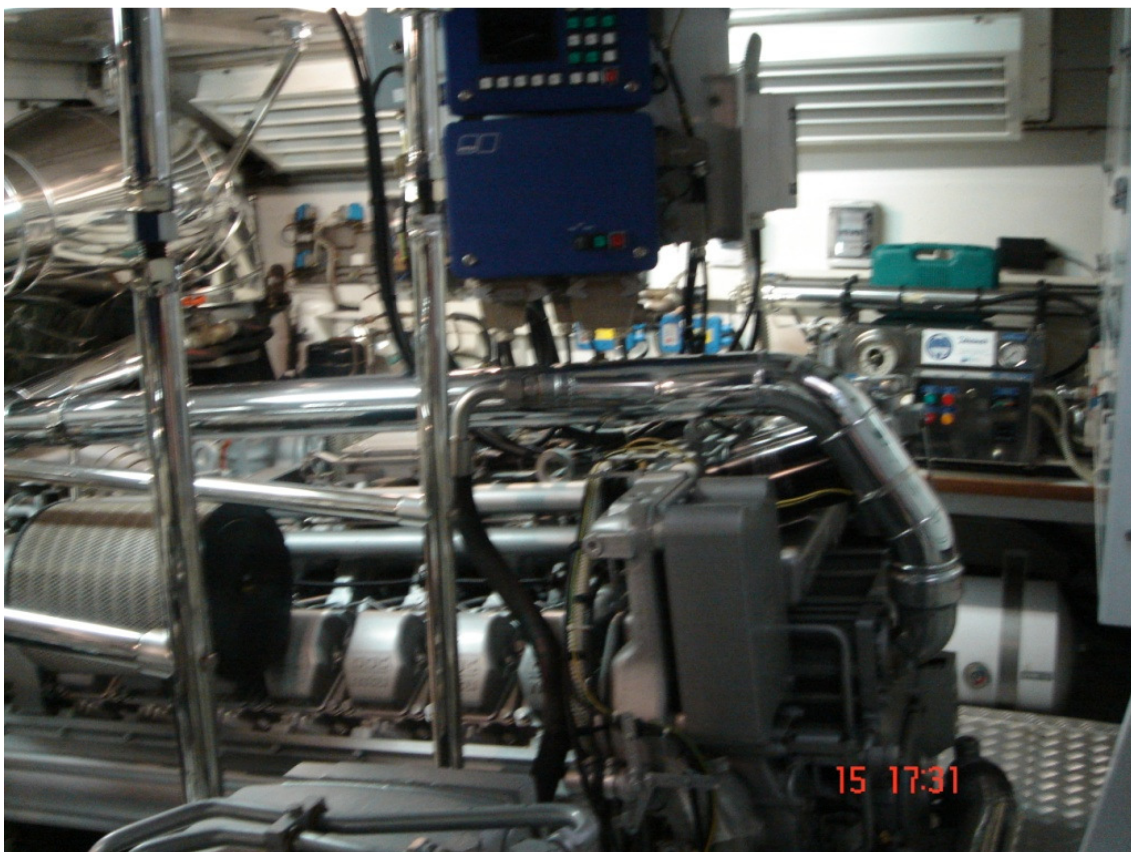
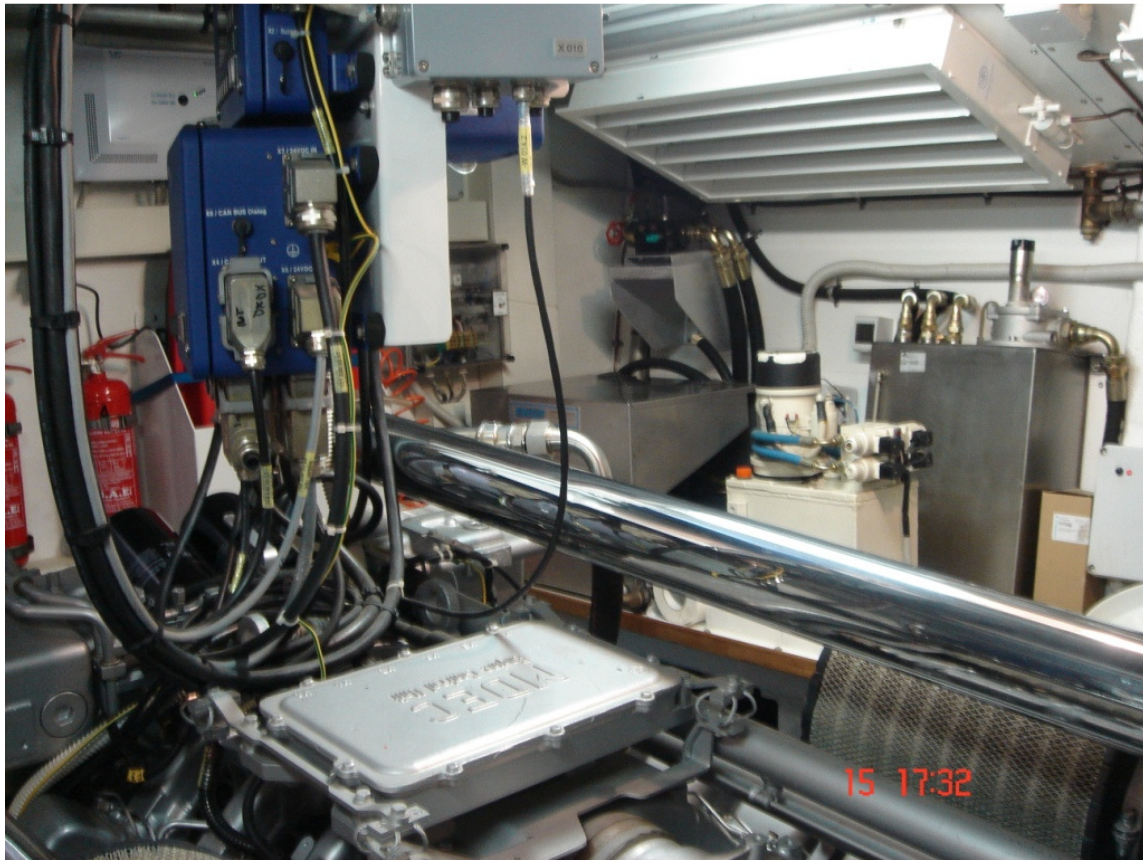














Specification are provided for informational purposes only. Data was obtained from sources believed reliable but is not guaranteed by owner or brokers. Buyer assumes responsibility to verify all speeds, capacities consumption and other measurements contained herein and otherwise provided and agrees to instruct his agents to confirm such details prior to purchase. Vessel subject to prior sale, price and inventory changes and withdrawal from market without notice.
